

Ohrevné tyče sú ohrievacie telesá s vysokou účinnosťou a špeciálnou konštrukciou, ktorá umožňuje prestup tepla z malého povrchu. Relatívne malé rozmery s jednostranným uchytением umožňujú inštaláciu tyčí v malom priestore. Ohrevné tyče sa primárne používajú na ohrev pevných telies. Pri inštaláciách do vhodných kovových puzdier je možné tyče využiť aj na ohrev kvapalín (voda, olej, emulzia alebo aj plynov.

#### Charakteristika

- max. záťaž: 62W/cm<sup>2</sup>
- max. prevádzková teplota: 870°C
- hermeticky tesné
- možnosť použitia vnútorného termočlánku

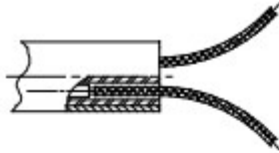
#### Špecifikácia

- plášť: uhlíková oceľ, mosadz, Cr-Ni oceľ
- tvar: rovná tyč
- napájanie: 12V až 380V
- priemer tyče s toleranciou v triede presnosti H7: 5 až 70 mm
- dĺžka tyče: 20 až 2300 mm

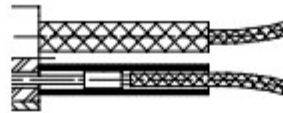


| Parameters                    | GP/GPT  | GPN                | GPF   |
|-------------------------------|---|--------------------|---|
| Heater diameter               | Standard [mm]: ø6.5, ø8.0, ø10, ø12.5, ø16, ø20<br>Inch: 1/4" 3/8" 1/2" 5/8" 3/4"<br>Custom [mm]: for ø6 to ø50 |                    | Metric: [mm]<br>ø6.5, ø8.0, ø10, ø12.5, ø16, ø20<br>Inch: 1/4" 3/8" 1/2" 5/8" 3/4" 1" |
| Diameter tolerance            | -0.02 [mm]<br>-0.08 [mm]  | +0.2 [mm]          | -0.02 [mm]<br>-0.08 [mm]  |
| Range of length               | 20-1000 [mm]  |                    | do 2300[mm]   |
| Length tolerance              | ±1,5%   |                    | ±2% (minimum 2,4mm)   |
| Voltage                       | 12-380 [V]  |                    | 12-480 [V]  |
| Surface loading               | 35W/cm <sup>2</sup>   | 5W/cm <sup>2</sup> | do 62W/cm <sup>2</sup>  |
| Maximum operating temperature | 500°C (on the sheath)   |                    | 870°C (on the sheath)   |
| Power                         | 50-3000W  |                    | 5000W   |
| Power tolerance               | +5[%]<br>-10  |                    | +5[%]<br>-10  |
| Tube material                 | Stal Cr-Ni 1H18N9T  |                    | Incoloy 800   |
| Minimum lengths of dead zones | - from the bottom: 4 [mm]<br>- from the insulator: 6 [mm]   |                    | - from the bottom: 6[mm]<br>- from the insulator: 6 [mm]                              |

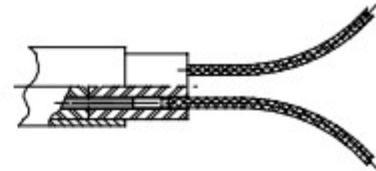
Type A



Type B



Type C



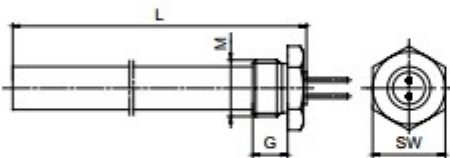
Type D



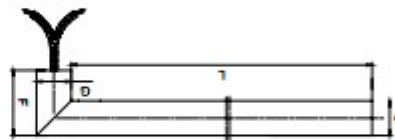
Type E



Type G



Type F



## Product code

|                      |  |
|----------------------|--|
| Type                 |  |
| GP                   | GP   |
| GPT                  | GPT  |
| GPN                  | GPN  |
| GPF                  | GPF  |
| 1                    | <input type="text"/>                                   |
| Diameter [mm]        |  |
| 2                    | <input type="text"/> parameters acc. to requirements   |
| Length [mm]          |  |
| 3                    | <input type="text"/> parameters acc. to requirements   |
| Power [W]            |  |
| 4                    | <input type="text"/> parameters acc. to requirements   |
| Voltage [V]          |  |
| 5                    | <input type="text"/> parameters acc. to requirements   |
| Termination type     |  |
|                      | A straight, inner contact                              |
|                      | B straight, outer contact                              |
|                      | C straight, contact in ceramic block                   |
|                      | D angular, directly form the heater                    |
|                      | E angular, with steel block                            |
|                      | F angular, with sleeve                                 |
| 6                    | <input type="text"/> G with threaded sleeve (x-thread) |
| Lead wire protection |  |
|                      | 0 none   |
|                      | P corrugated pipe                                      |
|                      | Ws insulated wire, up to 400°C                         |
| 7                    | <input type="text"/>                                   |
| Lead wire length [m] |  |
| 8                    | <input type="text"/> parameters acc. to requirements   |

1    2    3    4    5    6    7    8  
 -  -  -  -  -  -  -

Ordering example:

GP-10x350-200W/230V-A-Ws-0,5m